

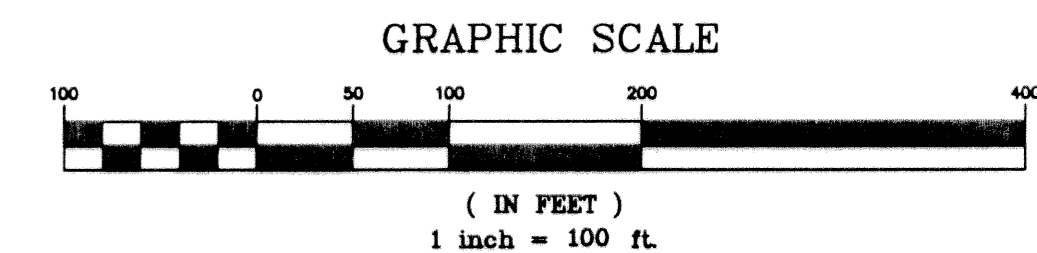
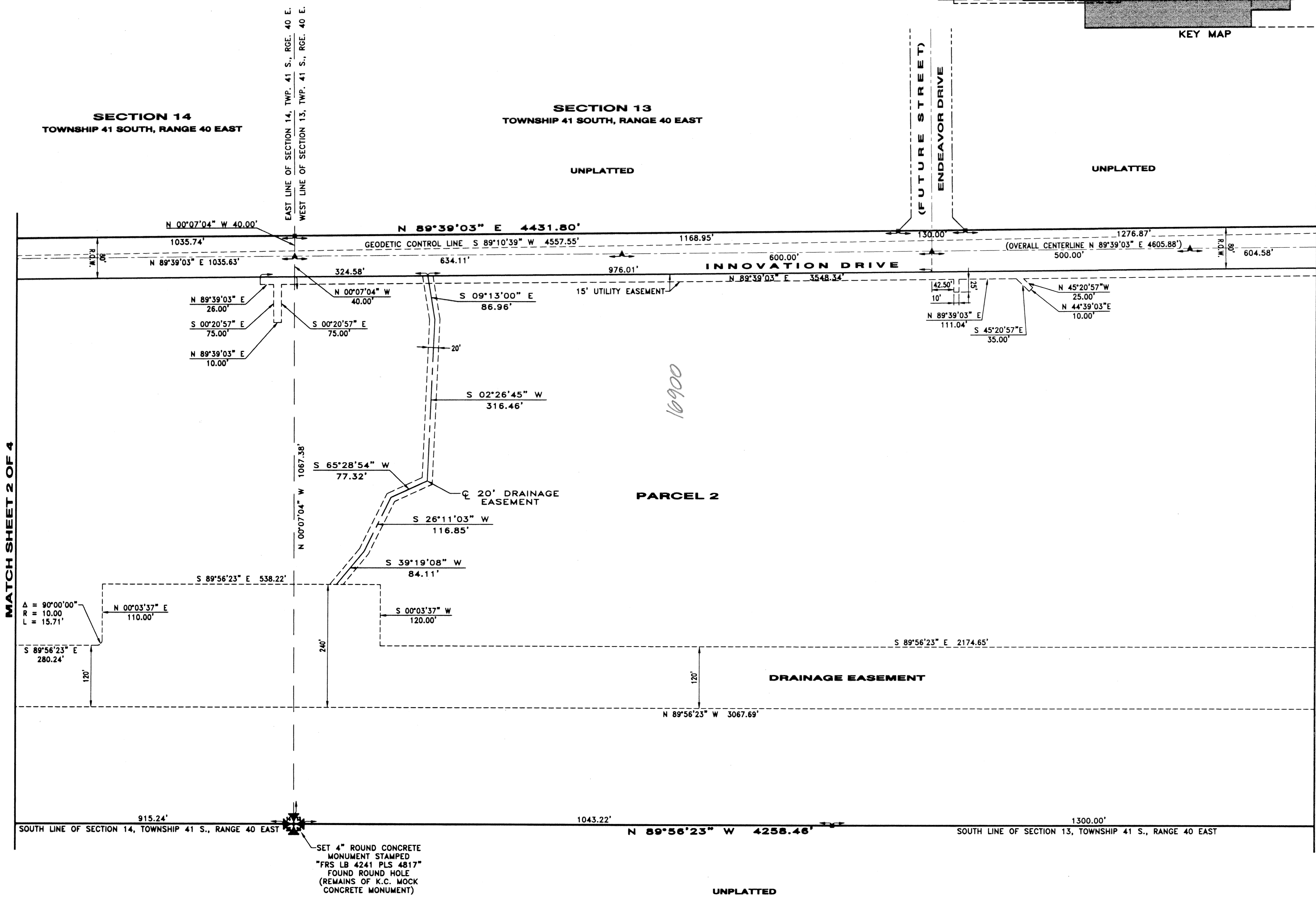
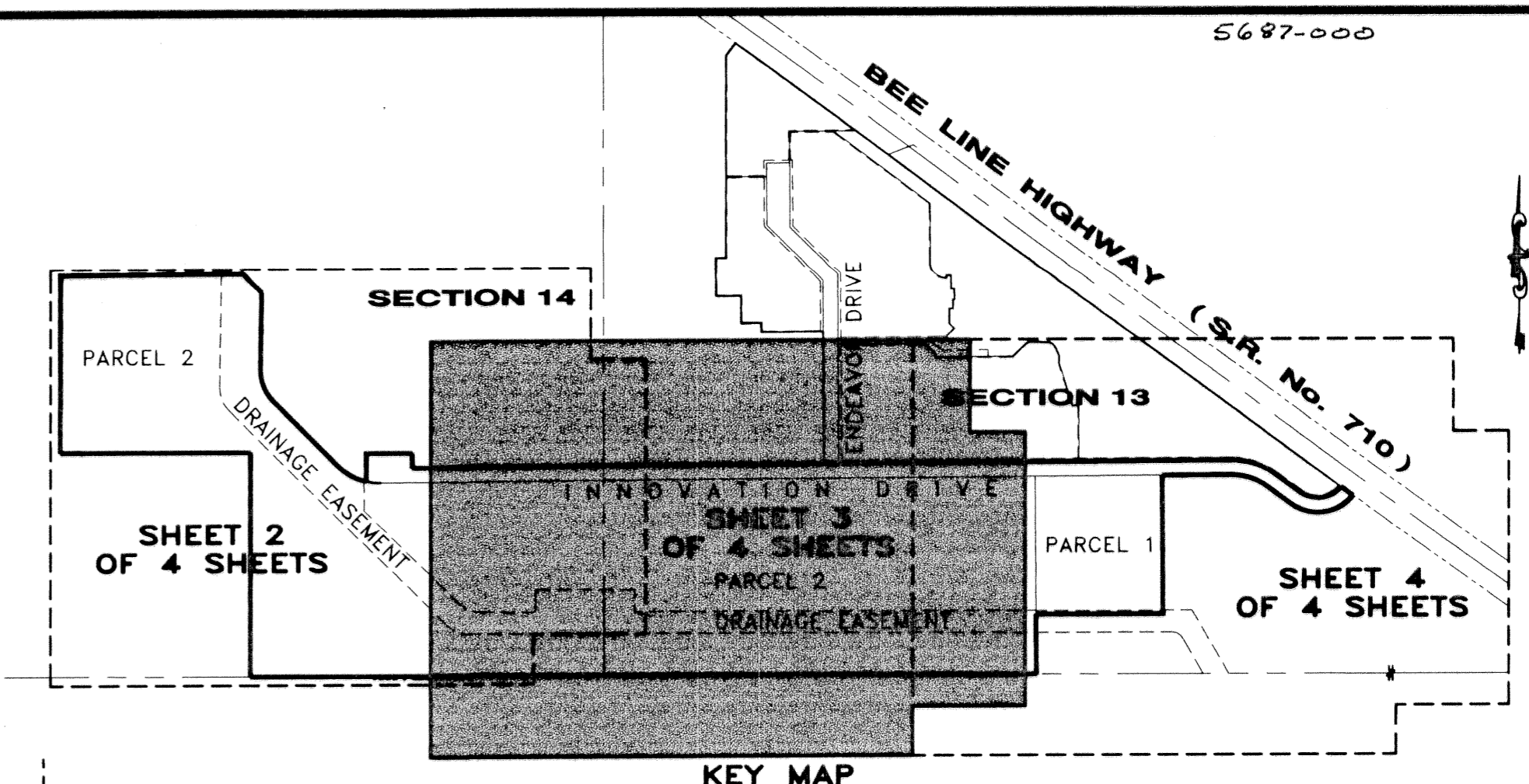
INNOVATION SUBDIVISION

BEING A PLAT OF A PORTION OF SECTIONS 13 & 14, TOWNSHIP 41 SOUTH,
RANGE 40 EAST, PALM BEACH COUNTY, STATE OF FLORIDA

MARCH 2003

SHEET 3 OF 4

52



LEGEND

- P.B. = PLAT BOOK
 - PG. = PAGE
 - L = ARC LENGTH
 - R = RADIUS
 - Δ = DELTA
 - P.S.M. = PROFESSIONAL SURVEYOR AND MAPPER
 - P.B.C. = PALM BEACH COUNTY
 - PLAT = DISTANCE ON RECORDED PLAT
 - SURVEY = FIELD MEASUREMENT
 - L.B. = LICENSED BUSINESS
 - P.C.P. = PERMANENT CONTROL POINT
 - R.O.W. = RIGHT-OF-WAY
 - = PERMANENT REFERENCE MONUMENT (P.R.M.)
CONCRETE MONUMENT STAMPED "L.B. #4241,
PLS #4817"
 - ▲ = PERMANENT CONTROL POINT (P.C.P.)
NAIL AND BRASS DISK "LB #4241,
PLS #4817"
- SCALE FACTOR USED TO CONVERT FROM GROUND TO GRID= 1.00000086

THIS INSTRUMENT PREPARED BY GARY P. WILLIAMS IN THE OFFICES OF
F.R.S. & ASSOCIATES INC., 901 NORTHPOINT PARKWAY, SUITE 301,
WEST PALM BEACH, FLORIDA PHONE: (561) 478-7178

F.R.S. & ASSOCIATES, INC.
LAND SURVEYORS AND LAND PLANNERS
CERTIFICATE OF AUTHORIZATION NO. LB 4241
901 NORTHPOINT PARKWAY, SUITE 301
WEST PALM BEACH, FLORIDA 33407-1953
PHONE (561) 478-7178 FAX (561) 478-7922

SCALE: 1" = 100'	DRAWN BY: T.C.M.	FIELD BOOK	CADD REF.
DATE: 12/2002	APPR. BY: G.P.W.	PW 1 & 2	(DRAWN/PLATTED/SITE PLATTING) INNOVATION SUBDIVISION SHT 03.DWG
INNOVATION SUBDIVISION			JOB NUMBER:
SECTIONS 13 & 14, TOWNSHIP 41 SOUTH, RANGE 40 EAST			D 2K-021D
PALM BEACH COUNTY, FLORIDA			SHEET 3 OF 4

SUBDIVISION: INNOVATION SUBDIVISION
 BOOK: 98
 FLOOD ZONE: B
 QUAD: B0
 SE
 TAZ: 022
 FUD NAME:

SET 4" ROUND CONCRETE
MONUMENT STAMPED
"FRS LB 4241 PLS 4817"
FOUND ROUND HOLE
(REMAINS OF K.C. MOCK
CONCRETE MONUMENT)